

FITC-equivalent Human TM4SF1 Protein-Nanodisc

Cat. No. TSF-HM00N

Description

Source	Recombinant FITC-equivalent Human TM4SF1 Protein-Nanodisc is expressed from HEK293 with His tag at the N-terminus. It contains Met1-Cys202.
Accession	P30408
Molecular Weight	The protein has a predicted MW of 51.80 kDa.
Wavelength	Excitation Wavelength: 490 nm Emission Wavelength: 520 nm
Endotoxin	Less than 1EU per μg by the LAL method.

Formulation and Storage

Formulation	Supplied as 0.22 μm filtered solution in PBS (pH 7.4). Notice: Not recommended for immunization.
Storage	Valid for 12 months from date of receipt when stored at -80°C . Recommend to aliquot the protein into smaller quantities for optimal storage. Please minimize freeze-thaw cycles.

Background

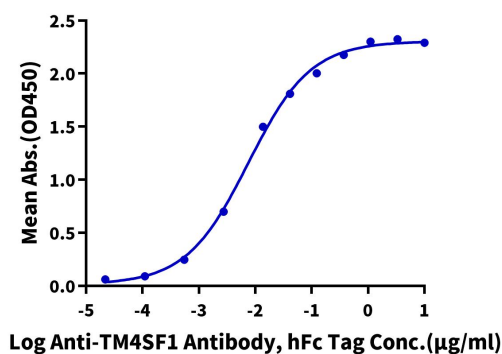
Transmembrane-4-L-six-family-1(TM4SF1), a four-transmembrane L6 family member, is highly expressed in various pancreatic cancer cell lines and promotes cancer cells metastasis. It is upregulated in several epithelial cancers and is closely associated with poor prognosis.

Assay Data

ELISA Data

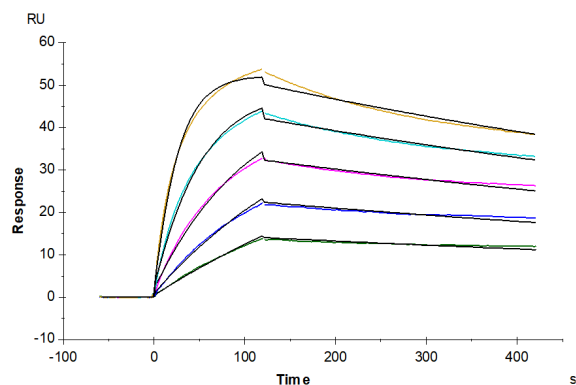
Human TM4SF1 Nanodisc, His Tag ELISA

0.1 μg Human TM4SF1 Nanodisc, His Tag Per Well



Immobilized FITC-equivalent Human TM4SF1 Nanodisc, His Tag at $1\mu\text{g}/\text{ml}$ ($100\mu\text{l}/\text{well}$) on the plate. Dose response curve for Anti-TM4SF1 Antibody, hFc Tag with the EC₅₀ of $7.5\text{ng}/\text{ml}$ determined by ELISA (QC Test).

SPR Data



FITC-equivalent Human TM4SF1 Nanodisc, His Tag captured on CM5 Chip via Anti-his antibody can bind Anti-TM4SF1 Antibody with an affinity constant of 0.54 nM as determined in SPR assay (Biacore T200).